



**Second Amended Declaration of Local Disaster and Public Health Emergency
Related to Communicable Disease**

WHEREAS, on March 26, 2020, I, Terri Brown, as Mayor of the City of Marshall, Texas, issued a declaration of local disaster and public health emergency for the City of Marshall resulting from the global pandemic of the novel coronavirus designated SARS-CoV2 which causes the disease COVID-19; and,

WHEREAS, on April 1, 2020, the City Commission for the City of Marshall confirmed the emergency declaration; and

WHEREAS, on April 9, 2020, the City Commission for the City of Marshall confirmed the March 31, 2020 stay-at-home order; and

WHEREAS, the conditions necessitating the aforesaid declaration continue to exist; and,

WHEREAS, since March 31, 2020, additional persons in Harrison County have tested positive for the aforesaid SARS-CoV2 virus; and,

WHEREAS, in his March 22, 2020, press conference, the Governor of the State of Texas acknowledged that cities may need to enact more stringent measures to address this public health emergency; and,

WHEREAS, because of the risk of the rapid spread of the virus, the need to protect the most vulnerable members of the community, the intent to ensure that the maximum number of people self-isolate in their places of residence to the maximum extent feasible, while enabling essential services to continue, and the desire to slow the spread of COVID-19 to the maximum extent possible, this Second Amended Declaration of Local Disaster and Public Health Emergency Related to Communicable Disease (herein sometimes called this "Order") is required; and,

WHEREAS, this Order is issued based on evidence of increasing occurrence of COVID-19 within the County and throughout the Northeast Texas area, scientific evidence and best practices regarding the most effective approaches to slow the transmission of communicable diseases generally and COVID-19 specifically, and evidence that the age, condition, and health of a significant portion of the population of the City places it at risk for serious health complications. including death, from COVID-19; and,

WHEREAS, making the problem worse, some individuals who contract

the COVID-19 virus have no symptoms or have mild symptoms, which means they may not be aware they carry the virus; and,

WHEREAS, because even people without symptoms can transmit the disease, and because evidence shows the disease is easily spread, gatherings can result in preventable transmission of the virus; and,

WHEREAS, the scientific evidence shows that at this stage of the emergency, it is essential to slow virus transmission as much as possible to protect the most vulnerable and to prevent the healthcare system from being overwhelmed; and,

WHEREAS, one proven way to slow the transmission of the COVID-19 virus is to limit interactions among people to the greatest extent practicable; and,

WHEREAS, by reducing the spread of the COVID-19 virus, this Order helps preserve critical and limited healthcare capacity in the City;

NOW, THEREFORE, BE IT PROCLAIMED AND ORDERED BY TERRI BROWN, MAYOR OF THE CITY OF MARSHALL, TEXAS:

1. The previously amended Declaration of Local Disaster and Public Health Emergency Related to Communicable Disease for the City of Marshall, Texas is hereby renewed and confirmed as amended herein.
2. The declaration of local disaster and public health emergency shall continue in effect until the Marshall City Commission terminates its consent to the continuation of this declaration or until this declaration is terminated by order of the Mayor, whichever occurs first.
3. Pursuant to §418.108(c) of the Texas Government Code, this amended declaration of local disaster and public health emergency issued for the City of Marshall on April 13, 2020, shall be given prompt and general publicity and shall be filed promptly with the City Secretary.
4. Pursuant to §418.108(d) of the Texas Government Code, this amendment of the aforesaid declaration of local disaster and public health emergency continues to activate the Marshall Emergency Management Plan.
5. Whereas, the Mayor is authorized to exercise any powers, take any actions and issue any orders authorized by law, including but not limited to, any measures authorized by Chapter 418 of the Texas Government Code, including without limitation §418.108 and §418.1015 of said chapter.
6. All officers and employees of the City of Marshall, including without limitation all law enforcement officers employed by the City of Marshall and all emergency medical personnel employed by the City of Marshall, are hereby authorized and directed to continue to cooperate to the fullest extent allowed by law with the

health authority designated by the City of Marshall pursuant to Chapter 121 of the Texas Health and Safety Code to enforce any and all communicable disease control measures imposed by said health authority pursuant to Chapter 81 of the Texas Health and Safety Code or other applicable law.

7. All individuals currently living within the City of Marshall, Texas (the “City”) are ordered to shelter at their place of residence. To the extent individuals are using shared or outdoor spaces, they must at all times as reasonably possible maintain social distancing of at least six feet from any other person when they are outside their residence. All persons may leave their residences only for Essential Activities, Essential Governmental Functions, or to operate Essential Businesses, all as defined in Section 11. Individuals experiencing homelessness are exempt from this Section, but are strongly urged to obtain shelter, and entities are strongly urged to make such shelter available as soon as possible and to the maximum extent practicable (and to utilize Social Distancing Requirements in their operation).
8. All businesses with a facility in the City, except Essential Businesses as defined below in Section 11, are required to cease all activities at facilities located within the City except Minimum Basic Operations, as defined in Section 11. For clarity, businesses may also continue operations consisting exclusively of employees or contractors performing activities at their own residences (i.e., working from home). All Essential Businesses are strongly encouraged to remain open; however, even Essential Businesses are encouraged to determine essential staff necessary to operate and to send non-essential staff home. To the greatest extent feasible, Essential Businesses shall comply with Social Distancing Requirements as defined in Section 11 below, including, but not limited to, when any customers are standing in line.
9. All public and private gatherings of any number of people occurring outside a household or living unit are prohibited, except for the limited purposes as expressly permitted in Section 11. Nothing in this Order prohibits the gathering of members of a household or living unit.
10. All travel, except Essential Travel and Essential Activities as defined below in Section 11, is prohibited. People must use public transit only for purposes of performing Essential Activities or to travel to and from work to operate Essential Businesses or maintain Essential Governmental Functions. People riding on public transit must comply with Social Distancing Requirements as defined in Section 11 below, to the greatest extent feasible. This Order allows travel into or out of the City to perform Essential Activities, operate Essential Businesses, or maintain Essential Governmental Functions.
11. Definitions and Exemptions:
 - A. For purposes of this Order, individuals may leave their residence only to perform any of the following “Essential Activities”:

- i. To engage in activities or perform tasks essential to their health and safety, or to the health and safety of their family or household members (including, but not limited to, pets), such as, by way of example only and without limitation, obtaining medical supplies or medication, visiting a health care professional, or obtaining supplies they need to work from home;
- ii. To obtain necessary services or supplies for themselves and their family or household members, or to deliver those services or supplies to others, such as, by way of example only and without limitation, canned food, dry goods, fresh fruits and vegetables, pet supply, fresh meats, fish, and poultry, and any other household consumer products, and products necessary to maintain the safety, sanitation, and essential operation of residences;
- iii. To engage in outdoor activity, such as, by way of example and without limitation, walking, hiking, running or riding a bicycle. Except for members of a residence who are sheltering together, the individuals shall comply with Social Distancing Requirements as defined in this Section:
- iv. To perform work providing essential products and services at an Essential Business or to otherwise carry out activities specifically permitted in this Order, including Minimum Basic Operations; and
- v. To care for a family member or pet in another household.

But people at high risk of severe illness from COVID-19 and people who are sick are urged to stay in their residence to the extent possible except as necessary to seek medical care.

- B. For purposes of this Order, individuals may leave their residence to work for or obtain services at any “Healthcare Operations” including hospitals clinics, dentists, pharmacies, pharmaceutical, and biotechnology companies, other healthcare facilities, healthcare suppliers, home healthcare services providers, mental health providers, or any related and/or ancillary healthcare services. “Healthcare Operations” also includes veterinary care and all healthcare services provided to animals. This exemption shall be construed broadly to avoid any impacts to the delivery of healthcare, broadly defined. “Healthcare Operations” does not include fitness and exercise gyms and similar facilities.

- C. For purposes of this Order, individuals may leave their residence to provide any services or perform any work necessary to the operations and maintenance of “Essential Infrastructure” which is defined as the 16 critical infrastructure sectors as identified by the National Cybersecurity and Infrastructure Security Agency (CISA), including, but not limited to, construction, airport operations, water, sewer, gas, electrical, oil refining, roads and highways, public transportation, solid waste collection and removal, internet, and telecommunications systems (including the provision of essential global, national, and local infrastructure for computing services, business infrastructure, communications, and web-based services), financial institutions, defense and national security-related operations, and essential manufacturing operations, provided that they carry out those services or that work in compliance with Social Distancing Requirements as defined in this Section, to the extent possible.
- D. For purposes of this Order, all first responders, emergency management personnel, emergency dispatchers, court personnel (including local, municipal, state and federal courts and those who serve any function in those courts), and law enforcement personnel, and others who need to perform essential services are categorically exempt from this Order. Further, nothing in this Order shall prohibit any individual from performing or accessing “Essential Governmental Function”, as determined by the governmental entity performing those functions. Each governmental entity shall identify and designate appropriate employees or contractors to continue providing and carrying out any Essential Governmental Functions. All Essential Governmental Functions shall be performed in compliance with Social Distancing Requirements as defined in this Section, to the extent possible.
- E. For the purposes of this Order, covered businesses include any for-profit, non-profit, or educational entities, regardless of the nature of the service, the function they perform, or its corporate or entity structure.
- F. For the purpose of this Order, “Essential Businesses” means:
 - i. Healthcare Operations and Essential Infrastructure;
 - ii. Grocery stores, certified farmers' markets, farm and produce stands, supermarkets, food banks, convenience stores, and other establishments engaged in the retail sale of canned food, dry goods, fresh fruits and vegetables, pet supply, fresh meats, fish, and poultry, and any other household consumer products (such as cleaning and personal care products), and liquor stores. This includes stores that sell groceries and also sell other non-grocery products, and products necessary to maintaining the safety, sanitation, and essential operation of residences:

- iii. Food cultivation, including farming, livestock, and fishing;
- iv. Businesses that provide food, shelter, and social services, and other necessities of life for economically disadvantaged or otherwise needy individuals;
- v. Newspapers, television, radio, and other media services;
- vi. Gas stations and auto-supply, auto-repair, and related facilities;
- vii. Banks and related financial institutions;
- viii. Hardware and construction supply stores;
- ix. Plumbers, electricians, exterminators, and other service providers who provide services that are necessary to maintaining the safety, sanitation, and essential operation of residences, Essential Activities, and Essential Businesses;
- x. Businesses providing mailing and shipping services, including post office boxes;
- xi. Laundromats, drycleaners, and laundry service providers;
- xii. Restaurants and other facilities that prepare and serve food, but only for delivery or carry out. Schools and other entities that typically provide food services to students or members of the public may continue to do so under this Order on the condition that the food is provided to students or members of the public on a pick-up or take-away basis only. Schools and other entities that provide food services under this exemption shall not permit the food to be eaten at the site where it is provided, or at any other gathering site;
- xiii. Businesses that supply products needed for people to work from home;
- xiv. Businesses that supply other Essential Businesses with the support or supplies necessary to operate;
- xv. Businesses that ship or deliver groceries, food, goods or services directly to residences;
- xvi. Airlines, taxis, and other private transportation providers providing transportation services necessary for Essential Activities and other purposes expressly authorized in this Order;

- xvii. Home-based care for seniors, adults, or children;
- xviii. Residential facilities and shelters for seniors, adults, and children;
- xix. Professional services: legal, accounting, insurance, real estate services (including appraisal, survey, and title services);
- xx. Childcare facilities providing services that enable employees exempted in this Order to work as permitted;
- xxi. Utilities, all telecommunications including internet service providers, trash collection and disposal, law enforcement, EMS/ambulance, corrections, dispatch, private investigators, animal shelters, governmental employees who have not been specifically deemed non-essential and sent home by the government entity;
- xxii. Janitorial and maintenance services, funeral industry, defense industry, space and technology industry, technology support, and scientific research; and
- xxiii. Religious services provided in residences, Healthcare Operations, at funerals, or provided online while being broadcast from a religious facility.
- xxiv. Educational institutions including public, private, elementary through high school and institutions of higher education may provide support services to effectively operate online classes and to serve students who may reside on campus.

G. For the purposes of this Order, “Minimum Basic Operations” include the following, provided that employees comply with Social Distancing Requirements as defined this Section, to the extent possible, while carrying out such operations:

- i. The minimum necessary activities to maintain the value of the business’s inventory, ensure security, process payroll and employee benefits, or for related functions; and
- ii. The minimum necessary activities to facilitate employees of the business being able to continue to work remotely from their residences.

H. For the purposes of this Order, “Essential Travel” includes travel for any of the following purposes:

- i. Any travel related to the provision of or access to Essential Activities, Essential Governmental Functions, Essential Businesses, or Minimum Basic Operations;
- ii. Travel to care for elderly, minors, dependents, persons with disabilities, or other vulnerable persons;
- iii. Travel to or from educational institutions for purposes of receiving materials for distance learning, for receiving meals, and any other related services;
- iv. Travel to return to a place of residence from outside the jurisdiction;
- v. Travel required by law enforcement or court order; or
- vi. Travel required for non-residents to return to their place of residence outside the City. Individuals are strongly encouraged to verify that their transportation out of the City remains available and functional prior to commencing such travel.

Individuals engaged in any Essential Travel must comply with all Social Distancing requirements as defined in this Section.

- I. For purposes of this Order, residences include hotels, motels, shared rental units, and similar facilities.
 - J. For purposes of this Order, “Social Distancing Requirements” includes maintaining at least six-foot social distancing from other individuals, washing hands with soap and water for at least twenty seconds as frequently as possible or using hand sanitizer, covering coughs or sneezes (into the sleeve or elbow, not hands), regularly cleaning high-touch surfaces, and not shaking hands.
12. Non-essential businesses shall shut down except for maintaining Minimum Basic Operations as defined herein. Essential Businesses exempted from shut-down are encouraged to determine staff who are essential to operations and to send non-essential staff home.
 13. When people need to leave their places of residence, whether to obtain or perform vital services, or to otherwise facilitate authorized activities necessary for continuity of social and commercial life, they should at all times reasonably possible comply with Social Distancing Requirements as defined in Section 11 above.
 14. Sections 7 through 13 in this Order were effective at 11:59 p.m. on April 13, 2020, and shall continue in effect until further notice.

15. In accordance with federal guidelines, people are still prohibited from visiting nursing homes, state supported living centers, assisted living facilities, or long-term care facilities unless to provide critical assistance. Additionally, schools will remain temporarily closed to in-person classroom attendance.
16. Citizens are urged to follow the following Centers for Disease Control's (CDC) national guidelines, Executive Orders by Governor Greg Abbott and the City of Marshall Second Amended Declaration of Local Disaster and Public Health Emergency Related to Communicable Disease;
 - i. Restrict physical contact and publicly used areas.
 - ii. Maintain Social Distancing with a safe distance of six (6') feet between individuals.
 - iii. Every person in Texas shall avoid social gatherings in groups of 10 or more per Executive Order of Governor Abbott.
 - iv. Residents should not visit nursing homes, retirement, or long-term care facilities unless to provide critical assistance.
 - v. In accordance with the CDC, people shall avoid eating or drinking at bars, restaurants, and food courts, or visiting gyms or massage parlors. Residents may still utilize drive-thru, pickup, or delivery options through the Executive Order.
 - vi. Regularly wash hands with warm soap and water for at least 20 seconds.
 - vii. Avoid touching eyes, nose, or mouth.
 - viii. If soap is not available, use at least a 60% alcohol-based hand sanitizer.
 - ix. Avoid close contact with people who are sick. All persons should remain in the home if one person in the home exhibits symptoms.
 - x. Essential errands should be conducted by only one adult from the household. All other family members should remain sheltered at home.
 - xi. CDC recommends wearing a cloth face mask in public. The mask will fit snugly, be secured with ear loops, and be able to be laundered and machine dried often. A mask should not be placed on children under age 2, anyone who has trouble breathing, or unable to remove the mask without assistance. A mask with multiple layers of fabric should allow for breathing without restriction. The cloth face coverings recommended are not surgical masks or N-95 respirators as those critical supplies that must continue to be reserved for healthcare workers and first responders.
17. All provisions of this Order should be interpreted to effectuate its intent.
18. Failure to comply with any of the provisions of this Order constitutes an imminent threat to public health.
19. Physicians and/or medical providers shall report all lab confirmed positive cases to the Texas Department of State Health Services at 866-310-9698 immediately.

20. In accordance with Texas Government Code §418.173, a person who knowingly or intentionally violates this Order commits an offense punishable by a fine up to \$1,000.00 and/or confinement in jail for a term that does not exceed 180 days, and each day or portion of a day that such a violation continues shall constitute a separate offense.
21. The City of Marshall shall promptly provide copies of this Order by posting it on the City of Marshall website. In addition, the owner, manager, or operator of any facility that is likely to be impacted by this Order is strongly encouraged to post a copy of this Order onsite and to provide a copy to any member of the public asking for a copy.
22. If any subsection, sentence, clause, phrase, or word of this Order or any application of it to any person, structure, gathering, or circumstance is held to be invalid or unconstitutional by a decision of a court of competent jurisdiction, then such decision will not affect the validity of the remaining portions or applications of this Order.
23. Except as expressly provided otherwise herein, this Order shall take effect immediately from and after its issuance and remain in place until further notice.

PROCLAIMED and ORDERED this 13th day of April 2020.



Terri Brown, Mayor



CISA
CYBER+INFRASTRUCTURE

March 19, 2020

MEMORANDUM ON IDENTIFICATION OF ESSENTIAL CRITICAL INFRASTRUCTURE WORKERS DURING COVID-19 RESPONSE

FROM: Christopher C. Krebs
Director
Cybersecurity and Infrastructure Security Agency (CISA)

As the Nation comes together to slow the spread of COVID-19, on March 16th, the President issued updated Coronavirus Guidance for America. This guidance states that:

“If you work in a critical infrastructure industry, as defined by the Department of Homeland Security, such as healthcare services and pharmaceutical and food supply, you have a special responsibility to maintain your normal work schedule.”

The Cybersecurity and Infrastructure Security Agency (CISA) executes the Secretary of Homeland Security’s responsibilities as assigned under the Homeland Security Act of 2002 to provide strategic guidance, promote a national unity of effort, and coordinate the overall federal effort to ensure the security and resilience of the Nation’s critical infrastructure. CISA uses trusted partnerships with both the public and private sectors to deliver infrastructure resilience assistance and guidance to a broad range of partners.

In accordance with this mandate, and in collaboration with other federal agencies and the private sector, CISA developed an initial list of “Essential Critical Infrastructure Workers” to help State and local officials as they work to protect their communities, while ensuring continuity of functions critical to public health and safety, as well as economic and national security. The list can also inform critical infrastructure community decision-making to determine the sectors, sub-sectors, segments, or critical functions that should continue normal operations, appropriately modified to account for Centers for Disease Control (CDC) workforce and customer protection guidance.

The attached list identifies workers who conduct a range of operations and services that are essential to continued critical infrastructure viability, including staffing operations centers, maintaining and repairing critical infrastructure, operating call centers, working construction, and performing management functions, among others. The industries they support represent, but are not necessarily limited to, medical and healthcare, telecommunications, information technology systems, defense, food and agriculture, transportation and logistics, energy, water and wastewater, law enforcement, and public works.

We recognize that State, local, tribal, and territorial governments are ultimately in charge of implementing and executing response activities in communities under their jurisdiction, while the Federal Government is in a supporting role. As State and local communities consider COVID-19-related restrictions, CISA is offering this list to assist prioritizing activities related to continuity of operations and incident response, including the appropriate movement of critical infrastructure workers within and between jurisdictions.

Accordingly, this list is advisory in nature. It is not, nor should it be considered to be, a federal directive or standard in and of itself.

In addition, these identified sectors and workers are not intended to be the authoritative or exhaustive list of critical infrastructure sectors and functions that should continue during the COVID-19 response. Instead, State and local officials should use their own judgment in using their authorities and issuing implementation directives and guidance. Similarly, critical infrastructure industry partners will use their own judgment, informed by this list, to ensure continued operations of critical infrastructure services and functions. All decisions should appropriately balance public safety while ensuring the continued delivery of critical infrastructure services and functions.

CISA will continue to work with you and our partners in the critical infrastructure community to update this list as the Nation's response to COVID-19 evolves. We also encourage you to submit how you might use this list so that we can develop a repository of use cases for broad sharing across the country.

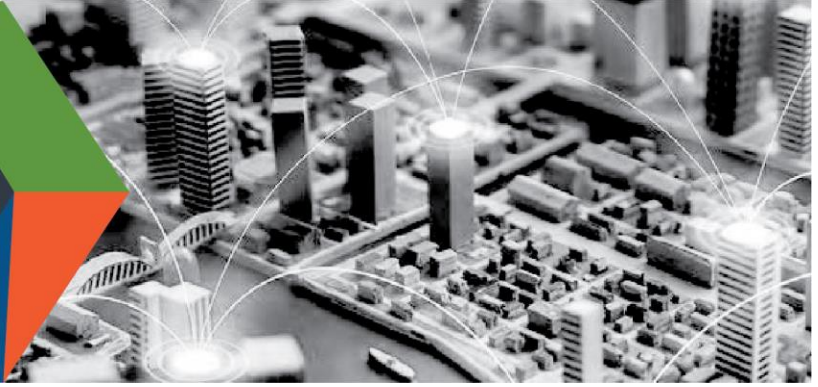
Should you have questions about this list, please contact CISA at CISA.CAT@cisa.dhs.gov.

Attachment: "Guidance on the Essential Critical Infrastructure Workforce: Ensuring Community and National Resilience in COVID-19 Response"



CISA
CYBER+INFRASTRUCTURE

DEFEND TODAY, SECURE TOMORROW



Guidance on the Essential Critical Infrastructure Workforce: Ensuring Community and National Resilience in COVID-19 Response

Version 1.1 (March 23, 2020)

THE IMPORTANCE OF ESSENTIAL CRITICAL INFRASTRUCTURE WORKERS

Functioning critical infrastructure is imperative during the response to the COVID-19 emergency for both public health and safety as well as community well-being. Certain critical infrastructure industries have a special responsibility in these times to continue operations.

This guidance and accompanying list are intended to support State, Local, and industry partners in identifying the critical infrastructure sectors and the essential workers needed to maintain the services and functions Americans depend on daily and that need to be able to operate resiliently during the COVID-19 pandemic response.

This document gives guidance to State, local, tribal, and territorial jurisdictions and the private sector on defining essential critical infrastructure workers. Promoting the ability of such workers to continue to work during periods of community restriction, access management, social distancing, or closure orders/directives is crucial to community resilience and continuity of essential functions.

CONSIDERATIONS FOR GOVERNMENT AND BUSINESS

This list was developed in consultation with federal agency partners, industry experts, and State and local officials, and is based on several key principles:

1. Response efforts to the COVID-19 pandemic are locally executed, State managed, and federally supported
2. Everyone should follow guidance from the CDC, as well as State and local government officials, regarding strategies to limit disease spread.
3. Workers should be encouraged to work remotely when possible and focus on core business activities. In-person, non-mandatory activities should be delayed until the resumption of normal operations.
4. When continuous remote work is not possible, businesses should enlist strategies to reduce the likelihood of spreading the disease. This includes, but is not necessarily limited to, separating staff by off-setting shift hours or days and/or social distancing. These steps can preserve the workforce and allow operations to continue.

CONNECT WITH US
www.cisa.gov

For more information,
email CISA.CAT@cisa.dhs.gov



[Linkedin.com/company/cybersecurity-and-infrastructure-security-agency](https://www.linkedin.com/company/cybersecurity-and-infrastructure-security-agency)



@CISAgov | @cyber | @uscert_gov



[Facebook.com/CISA](https://www.facebook.com/CISA)

5. All organizations should implement their business continuity and pandemic plans, or put plans in place if they do not exist. Delaying implementation is not advised and puts at risk the viability of the business and the health and safety of the employees.
6. In the modern economy, reliance on technology and just-in-time supply chains means that certain workers must be able to access certain sites, facilities, and assets to ensure continuity of functions.
7. Government employees, such as emergency managers, and the business community need to establish and maintain lines of communication.
8. When government and businesses engage in discussions about critical infrastructure workers, they need to consider the implications of business operations beyond the jurisdiction where the asset or facility is located. Businesses can have sizeable economic and societal impacts as well as supply chain dependencies that are geographically distributed.
9. Whenever possible, jurisdictions should align access and movement control policies related to critical infrastructure workers to lower the burden of workers crossing jurisdictional boundaries.

IDENTIFYING ESSENTIAL CRITICAL INFRASTRUCTURE WORKERS

The following list of sectors and identified essential critical infrastructure workers are an initial recommended set and are intended to be overly inclusive reflecting the diversity of industries across the United States. CISA will continually solicit and accept feedback on the list (both sectors/sub sectors and identified essential workers) and will evolve the list in response to stakeholder feedback. We will also use our various stakeholder engagement mechanisms to work with partners on how they are using this list and share those lessons learned and best practices broadly. We ask that you share your feedback, both positive and negative on this list so we can provide the most useful guidance to our critical infrastructure partners. Feedback can be sent to CISA.CAT@CISA.DHS.GOV.



CONNECT WITH US
www.cisa.gov

For more information,
email CISA.CAT@cisa.dhs.gov

 [Linkedin.com/company/cybersecurity-and-infrastructure-security-agency](https://www.linkedin.com/company/cybersecurity-and-infrastructure-security-agency)

 [@CISAgov](https://twitter.com/CISAgov) | [@cyber](https://twitter.com/cyber) | [@uscert_gov](https://twitter.com/uscert_gov)

 [Facebook.com/CISA](https://www.facebook.com/CISA)

HEALTHCARE / PUBLIC HEALTH

- Workers providing COVID-19 testing; Workers that perform critical clinical research needed for COVID-19 response
- Caregivers (e.g., physicians, dentists, psychologists, mid-level practitioners, nurses and assistants, infection control and quality assurance personnel, pharmacists, physical and occupational therapists and assistants, social workers, speech pathologists and diagnostic and therapeutic technicians and technologists)
- Hospital and laboratory personnel (including accounting, administrative, admitting and discharge, engineering, epidemiological, source plasma and blood donation, food service, housekeeping, medical records, information technology and operational technology, nutritionists, sanitarians, respiratory therapists, etc.)
- Workers in other medical facilities (including Ambulatory Health and Surgical, Blood Banks, Clinics, Community Mental Health, Comprehensive Outpatient rehabilitation, End Stage Renal Disease, Health Departments, Home Health care, Hospices, Hospitals, Long Term Care, Organ Pharmacies, Procurement Organizations, Psychiatric Residential, Rural Health Clinics and Federally Qualified Health Centers)
- Manufacturers, technicians, logistics and warehouse operators, and distributors of medical equipment, personal protective equipment (PPE), medical gases, pharmaceuticals (including materials used in radioactive drugs), blood and blood products, vaccines, testing materials, laboratory supplies, cleaning, sanitizing, disinfecting or sterilization supplies, and tissue and paper towel products
- Public health / community health workers, including those who compile, model, analyze and communicate public health information
- Blood and plasma donors and the employees of the organizations that operate and manage related activities
- Workers that manage health plans, billing, and health information, who cannot practically work remotely
- Workers who conduct community-based public health functions, conducting epidemiologic surveillance, compiling, analyzing and communicating public health information, who cannot practically work remotely
- Workers performing cybersecurity functions at healthcare and public health facilities, who cannot practically work remotely
- Workers conducting research critical to COVID-19 response
- Workers performing security, incident management, and emergency operations functions at or on behalf of healthcare entities including healthcare coalitions, who cannot practically work remotely
- Workers who support food, shelter, and social services, and other necessities of life for economically disadvantaged or otherwise needy individuals, such as those residing in shelters
- Pharmacy employees necessary for filling prescriptions
- Workers performing mortuary services, including funeral homes, crematoriums, and cemetery workers
- Workers who coordinate with other organizations to ensure the proper recovery, handling, identification, transportation, tracking, storage, and disposal of human remains and personal effects; certify cause of death; and facilitate access to mental/behavioral health services to the family members, responders, and survivors of an incident

CONNECT WITH US
www.cisa.gov

For more information,
email CISA.CAT@cisa.dhs.gov



[Linkedin.com/company/cybersecurity-and-infrastructure-security-agency](https://www.linkedin.com/company/cybersecurity-and-infrastructure-security-agency)



[@CISAgov](https://twitter.com/CISAgov) | [@cyber](https://twitter.com/cyber) | [@uscert_gov](https://twitter.com/uscert_gov)



[Facebook.com/CISA](https://www.facebook.com/CISA)

LAW ENFORCEMENT, PUBLIC SAFETY, FIRST RESPONDERS

- Personnel in emergency management, law enforcement, Emergency Management Systems, fire, air medical, and corrections, including front line and management
- Emergency Medical Service Technicians
- 911 call center employees
- Fusion Center employees
- Hazardous material responders from government and the private sector.
- Workers – including contracted vendors – who maintain, manufacture, or supply digital systems infrastructure supporting law enforcement emergency service, and response operations.

FOOD AND AGRICULTURE

- Workers supporting groceries, pharmacies, convenience stores, and other retail that sells human food, animal/pet food, and beverage products
- Restaurant carry-out and quick serve food operations - Carry-out and delivery food employees
- Food manufacturer employees and their supplier employees—to include those employed in food processing (packers, meat processing, cheese plants, milk plants, produce, etc.) facilities; livestock, poultry, seafood slaughter facilities; pet and animal feed processing facilities; human food facilities producing by-products for animal food; beverage production facilities; and the production of food packaging
- Farm workers to include those employed in animal food, feed, and ingredient production, packaging, and distribution; manufacturing, packaging, and distribution of veterinary drugs; truck delivery and transport; farm and fishery labor needed to produce our food supply domestically
- Farm workers and support service workers to include those who field crops; commodity inspection; fuel ethanol facilities; storage facilities; and other agricultural inputs
- Employees and firms supporting food, feed, and beverage distribution, including warehouse workers, vendor-managed inventory controllers and blockchain managers
- Workers supporting the sanitation of all food manufacturing processes and operations from wholesale to retail
- Company cafeterias - in-plant cafeterias used to feed employees
- Workers in food testing labs in private industries and in institutions of higher education
- Workers essential for assistance programs and government payments
- Employees of companies engaged in the production, storage, transport, and distribution of chemicals, medicines, vaccines, and other substances used by the food and agriculture industry, including pesticides, herbicides, fertilizers, minerals, enrichments, and other agricultural production aids
- Animal agriculture workers to include those employed in veterinary health; manufacturing and distribution of animal medical materials, animal vaccines, animal drugs, feed ingredients, feed, and bedding, etc.; transportation of live animals, animal medical materials; transportation of deceased animals for disposal; raising of animals for food; animal production operations; slaughter and packing plants, renderers, and associated regulatory and government workforce
- Workers who support the manufacture and distribution of forest products, including, but not limited to timber, paper, and other wood products
- Employees engaged in the manufacture and maintenance of equipment and other infrastructure necessary to agricultural production and distribution

CONNECT WITH US
www.cisa.gov

For more information,
email CISA.CAT@cisa.dhs.gov



[Linkedin.com/company/cybersecurity-and-infrastructure-security-agency](https://www.linkedin.com/company/cybersecurity-and-infrastructure-security-agency)



[@CISAGov](https://twitter.com/CISAGov) | [@cyber](https://twitter.com/cyber) | [@uscert_gov](https://twitter.com/uscert_gov)



[Facebook.com/CISA](https://www.facebook.com/CISA)

ENERGY

Electricity industry:

- Workers who maintain, ensure, or restore, or are involved in the development, transportation, fuel procurement, expansion, or operation of the generation, transmission, and distribution of electric power, including call centers, utility workers, reliability engineers and fleet maintenance technicians
- Workers needed for safe and secure operations at nuclear generation
- Workers at generation, transmission, and electric blackstart facilities
- Workers at Reliability Coordinator (RC), Balancing Authorities (BA), and primary and backup Control Centers (CC), including but not limited to independent system operators, regional transmission organizations, and balancing authorities
- Mutual assistance personnel
- IT and OT technology staff – for EMS (Energy Management Systems) and Supervisory Control and Data Acquisition (SCADA) systems, and utility data centers; Cybersecurity engineers; cybersecurity risk management
- Vegetation management crews and traffic workers who support
- Environmental remediation/monitoring technicians
- Instrumentation, protection, and control technicians

Petroleum workers:

- Petroleum product storage, pipeline, marine transport, terminals, rail transport, road transport
- Crude oil storage facilities, pipeline, and marine transport
- Petroleum refinery facilities
- Petroleum security operations center employees and workers who support emergency response services
- Petroleum operations control rooms/centers
- Petroleum drilling, extraction, production, processing, refining, terminal operations, transporting, and retail for use as end-use fuels or feedstocks for chemical manufacturing
- Onshore and offshore operations for maintenance and emergency response
- Retail fuel centers such as gas stations and truck stops, and the distribution systems that support them

Natural and propane gas workers:

- Natural gas transmission and distribution pipelines, including compressor stations
- Underground storage of natural gas
- Natural gas processing plants, and those that deal with natural gas liquids
- Liquefied Natural Gas (LNG) facilities
- Natural gas security operations center, natural gas operations dispatch and control rooms/centers natural gas emergency response and customer emergencies, including natural gas leak calls
- Drilling, production, processing, refining, and transporting natural gas for use as end-use fuels, feedstocks for chemical manufacturing, or use in electricity generation
- Propane gas dispatch and control rooms and emergency response and customer emergencies, including propane leak calls
- Propane gas service maintenance and restoration, including call centers

CONNECT WITH US
www.cisa.gov

For more information,
email CISA.CAT@cisa.dhs.gov

 [Linkedin.com/company/cybersecurity-and-infrastructure-security-agency](https://www.linkedin.com/company/cybersecurity-and-infrastructure-security-agency)

 [@CISAgov](https://twitter.com/CISAgov) | [@cyber](https://twitter.com/cyber) | [@uscert_gov](https://twitter.com/uscert_gov)

 [Facebook.com/CISA](https://www.facebook.com/CISA)

- Processing, refining, and transporting natural liquids, including propane gas, for use as end-use fuels or feedstocks for chemical manufacturing
- Propane gas storage, transmission, and distribution centers

WATER AND WASTEWATER

Employees needed to operate and maintain drinking water and wastewater/drainage infrastructure, including:

- Operational staff at water authorities
- Operational staff at community water systems
- Operational staff at wastewater treatment facilities
- Workers repairing water and wastewater conveyances and performing required sampling or monitoring
- Operational staff for water distribution and testing
- Operational staff at wastewater collection facilities
- Operational staff and technical support for SCADA Control systems
- Chemical suppliers for wastewater and personnel protection
- Workers that maintain digital systems infrastructure supporting water and wastewater operations

TRANSPORTATION AND LOGISTICS

- Employees supporting or enabling transportation functions, including truck drivers, bus drivers, dispatchers, maintenance and repair technicians, warehouse workers, truck stop and rest area workers, and workers that maintain and inspect infrastructure (including those that require cross-jurisdiction travel)
- Employees of firms providing services that enable logistics operations, including cooling, storing, packaging, and distributing products for wholesale or retail sale or use.
- Mass transit workers
- Workers responsible for operating dispatching passenger, commuter and freight trains and maintaining rail infrastructure and equipment
- Maritime transportation workers - port workers, mariners, equipment operators
- Truck drivers who haul hazardous and waste materials to support critical infrastructure, capabilities, functions, and services
- Automotive repair and maintenance facilities
- Manufacturers and distributors (to include service centers and related operations) of packaging materials, pallets, crates, containers, and other supplies needed to support manufacturing, packaging staging and distribution operations
- Postal and shipping workers, to include private companies
- Employees who repair and maintain vehicles, aircraft, rail equipment, marine vessels, and the equipment and infrastructure that enables operations that encompass movement of cargo and passengers
- Air transportation employees, including air traffic controllers and maintenance personnel, ramp workers, aviation and aerospace safety, security, and operations personnel and accident investigations
- Workers who support the maintenance and operation of cargo by air transportation, including flight crews, maintenance, airport operations, and other on- and off- airport facilities workers

CONNECT WITH US
www.cisa.gov

For more information,
email CISA.CAT@cisa.dhs.gov



[Linkedin.com/company/cybersecurity-and-infrastructure-security-agency](https://www.linkedin.com/company/cybersecurity-and-infrastructure-security-agency)



[@CISAgov](https://twitter.com/CISAgov) | [@cyber](https://twitter.com/cyber) | [@uscert_gov](https://twitter.com/uscert_gov)



[Facebook.com/CISA](https://www.facebook.com/CISA)

PUBLIC WORKS

- Workers who support the operation, inspection, and maintenance of essential dams, locks and levees
- Workers who support the operation, inspection, and maintenance of essential public works facilities and operations, including bridges, water and sewer main breaks, fleet maintenance personnel, construction of critical or strategic infrastructure, traffic signal maintenance, emergency location services for buried utilities, maintenance of digital systems infrastructure supporting public works operations, and other emergent issues
- Workers such as plumbers, electricians, exterminators, and other service providers who provide services that are necessary to maintaining the safety, sanitation, and essential operation of residences
- Support, such as road and line clearing, to ensure the availability of needed facilities, transportation, energy and communications
- Support to ensure the effective removal, storage, and disposal of residential and commercial solid waste and hazardous waste

COMMUNICATIONS AND INFORMATION TECHNOLOGY

Communications:

- Maintenance of communications infrastructure- including privately owned and maintained communication systems- supported by technicians, operators, call-centers, wireline and wireless providers, cable service providers, satellite operations, undersea cable landing stations (including cable marine depots and submarine cable ship operators), Internet Exchange Points, and manufacturers and distributors of communications equipment
- Workers who support radio, television, and media service, including, but not limited to front line news reporters, studio, and technicians for newsgathering and reporting
- Workers at Independent System Operators and Regional Transmission Organizations, and Network Operations staff, engineers and/or technicians to manage the network or operate facilities
- Engineers, technicians and associated personnel responsible for infrastructure construction and restoration, including contractors for construction and engineering of fiber optic cables
- Installation, maintenance and repair technicians that establish, support or repair service as needed
- Central office personnel to maintain and operate central office, data centers, and other network office facilities
- Customer service and support staff, including managed and professional services as well as remote providers of support to transitioning employees to set up and maintain home offices, who interface with customers to manage or support service environments and security issues, including payroll, billing, fraud, and troubleshooting
- Dispatchers involved with service repair and restoration

Information Technology:

- Workers who support command centers, including, but not limited to Network Operations Command Center, Broadcast Operations Control Center and Security Operations Command Center
- Data center operators, including system administrators, HVAC & electrical engineers, security personnel, IT managers, data transfer solutions engineers, software and hardware engineers, and database administrators
- Client service centers, field engineers, and other technicians supporting critical infrastructure, as well as

CONNECT WITH US
www.cisa.gov

For more information,
email CISA.CAT@cisa.dhs.gov



[Linkedin.com/company/cybersecurity-and-infrastructure-security-agency](https://www.linkedin.com/company/cybersecurity-and-infrastructure-security-agency)



[@CISAgov](https://twitter.com/CISAgov) | [@cyber](https://twitter.com/cyber) | [@uscert_gov](https://twitter.com/uscert_gov)



[Facebook.com/CISA](https://www.facebook.com/CISA)

manufacturers and supply chain vendors that provide hardware and software, and information technology equipment (to include microelectronics and semiconductors) for critical infrastructure

- Workers responding to cyber incidents involving critical infrastructure, including medical facilities, SLTT governments and federal facilities, energy and utilities, and banks and financial institutions, and other critical infrastructure categories and personnel
- Workers supporting the provision of essential global, national and local infrastructure for computing services (incl. cloud computing services), business infrastructure, web-based services, and critical manufacturing
- Workers supporting communications systems and information technology used by law enforcement, public safety, medical, energy and other critical industries
- Support required for continuity of services, including janitorial/cleaning personnel

OTHER COMMUNITY-BASED GOVERNMENT OPERATIONS AND ESSENTIAL FUNCTIONS

- Workers to ensure continuity of building functions
- Security staff to maintain building access control and physical security measures
- Elections personnel
- Federal, State, and Local, Tribal, and Territorial employees who support Mission Essential Functions and communications networks
- Trade Officials (FTA negotiators; international data flow administrators)
- Weather forecasters
- Workers that maintain digital systems infrastructure supporting other critical government operations
- Workers at operations centers necessary to maintain other essential functions
- Workers who support necessary credentialing, vetting and licensing operations for transportation workers
- Customs workers who are critical to facilitating trade in support of the national emergency response supply chain
- Educators supporting public and private K-12 schools, colleges, and universities for purposes of facilitating distance learning or performing other essential functions, if operating under rules for social distancing
- Hotel Workers where hotels are used for COVID-19 mitigation and containment measures

CRITICAL MANUFACTURING

- Workers necessary for the manufacturing of materials and products needed for medical supply chains, and for supply chains associated with transportation, energy, communications, food and agriculture, chemical manufacturing, nuclear facilities, the operation of dams, water and wastewater treatment, emergency services, and the defense industrial base. Additionally, workers needed to maintain the continuity of these manufacturing functions and associated supply chains.

HAZARDOUS MATERIALS

- Workers at nuclear facilities, workers managing medical waste, workers managing waste from pharmaceuticals and medical material production, and workers at laboratories processing test kits
- Workers who support hazardous materials response and cleanup
- Workers who maintain digital systems infrastructure supporting hazardous materials management operations

CONNECT WITH US
www.cisa.gov

For more information,
email CISA.CAT@cisa.dhs.gov



[Linkedin.com/company/cybersecurity-and-infrastructure-security-agency](https://www.linkedin.com/company/cybersecurity-and-infrastructure-security-agency)



[@CISAgov](https://twitter.com/CISAgov) | [@cyber](https://twitter.com/cyber) | [@uscert_gov](https://twitter.com/uscert_gov)



[Facebook.com/CISA](https://www.facebook.com/CISA)

FINANCIAL SERVICES

- Workers who are needed to process and maintain systems for processing financial transactions and services (e.g., payment, clearing, and settlement; wholesale funding; insurance services; and capital markets activities)
- Workers who are needed to provide consumer access to banking and lending services, including ATMs, and to move currency and payments (e.g., armored cash carriers)
- Workers who support financial operations, such as those staffing data and security operations centers

CHEMICAL

- Workers supporting the chemical and industrial gas supply chains, including workers at chemical manufacturing plants, workers in laboratories, workers at distribution facilities, workers who transport basic raw chemical materials to the producers of industrial and consumer goods, including hand sanitizers, food and food additives, pharmaceuticals, textiles, and paper products.
- Workers supporting the safe transportation of chemicals, including those supporting tank truck cleaning facilities and workers who manufacture packaging items
- Workers supporting the production of protective cleaning and medical solutions, personal protective equipment, and packaging that prevents the contamination of food, water, medicine, among others essential products
- Workers supporting the operation and maintenance of facilities (particularly those with high risk chemicals and/or sites that cannot be shut down) whose work cannot be done remotely and requires the presence of highly trained personnel to ensure safe operations, including plant contract workers who provide inspections
- Workers who support the production and transportation of chlorine and alkali manufacturing, single-use plastics, and packaging that prevents the contamination or supports the continued manufacture of food, water, medicine, and other essential products, including glass container manufacturing

DEFENSE INDUSTRIAL BASE

- Workers who support the essential services required to meet national security commitments to the federal government and U.S. Military. These individuals, include but are not limited to, aerospace; mechanical and software engineers, manufacturing/production workers; IT support; security staff; security personnel; intelligence support, aircraft and weapon system mechanics and maintainers
- Personnel working for companies, and their subcontractors, who perform under contract to the Department of Defense providing materials and services to the Department of Defense, and government-owned/contractor-operated and government-owned/government-operated facilities

CONNECT WITH US
www.cisa.gov

For more information,
email CISA.CAT@cisa.dhs.gov



[Linkedin.com/company/cybersecurity-and-infrastructure-security-agency](https://www.linkedin.com/company/cybersecurity-and-infrastructure-security-agency)



[@CISAgov](https://twitter.com/CISAgov) | [@cyber](https://twitter.com/cyber) | [@uscert_gov](https://twitter.com/uscert_gov)



[Facebook.com/CISA](https://www.facebook.com/CISA)